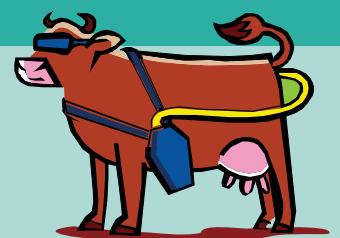


Easi-Scan

A tough, water resistant, digital ultrasound scanner in a small and robust battery operated package.



Ultrasound
Veterinary Imaging Solutions



Ultrasound Easi-Scan

A tough, water resistant, digital ultrasound scanner in a small and robust battery operated package.



Applications



Equine:
Fertility; Tendon



Cattle:
Fertility; Pregnancy



Deer:
Fertility

Benefits

Robust: The plastic casing and front panel are designed to be not only tough and hard-wearing, but also water resistant.

Portable: At only 3kg, Easi-Scan is light and easy to carry, and it's battery operated, so with no need for power leads, you can use it anywhere!

Easy to Use: Pre-programmed with application settings and with only five buttons, Easi-Scan is quick and simple to set up for the most effective imaging. The battery is very simple to swap and easy to charge.

Comfortable: With four different viewing options; battery powered monitor, goggles, LCD and monocular - you can work without twisting or straining.

Affordable: Priced so that each vet in a practice can have their own, avoiding all the complications of sharing equipment.

Options

- Display options: Goggles, Monocular, Remote Viewing CRT Monitor, Battery Powered Remote Viewing CRT Monitor, Liquid Crystal Display mounted on either Wrist or Scanner
- Backpacks and carry cases
- Spare Batteries
- Mains Power Adaptor
- 12V charge adaptor, can be used to charge the Easi-Scan or the monitor from your car
- Comfortable and durable Quick-Release Probe Introducer

Features

- 12V battery allows up to three hours' continuous operation
- Storage capability for sixty images, including a four second sound tag for each image (stored images can easily be transferred to computer)
- The image is sent from the scanner via radio-wave transmission, removing the need for wires between the scanner and the monitor; and with the option of a battery powered monitor - you really can be wireless!
- The broadband 4.5 - 8.5 MHz, vet rectal probe is durable and reliable
- Grid measurement system with various size options

Specifications

Operation/Image Modes: Standard B mode

Grey Shades: 256 different shades

Monitor: 10" diagonal, CRT monitor

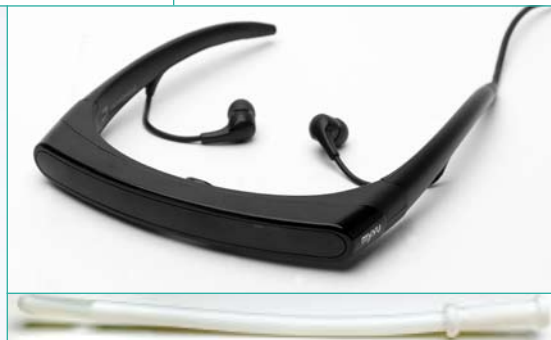
Probe: 128 element broadband (4.5MHz to 8.5MHz) crystal array vet linear probe

Power/Battery: 12V battery attached to the unit

Physical Dimensions (mm): 280(D) x 195(W) x 95(H)

Weight: 3kg (with battery)

Manufacturer: BCF Technology



www.bcftechnology.com

3 Rutherford Square, Brucefield Industry Park, Livingston, Scotland EH54 9BU
Tel: +44 1506 460023 Fax: +44 1506 460045 Email: info@bcftechnology.com

 **BCF**
Innovative Imaging